

Rhino Oil and Gas Exploration South Africa (Pty) Ltd

BACKGROUND INFORMATION ON PROPOSED PETROLEUM EXPLORATION ON VARIOUS FARMS IN KWAZULU-NATAL (291 ER)

October 2015

INTRODUCTION

Rhino Oil and Gas Exploration South Africa (Pty) Ltd has lodged an application for an exploration right with the Petroleum Agency South Africa (PASA) in terms of section 79 of the Minerals and Petroleum Resources Development Act, 28 of 2002 (MPRDA). Minerals included in the application are oil, gas, condensate, coal bed methane, helium and biogenic gas. The exploration area is broad and encompasses large parts of the central KwaZulu-Natal (see Figure 1).

Rhino Oil and Gas intends to undertake early-phase petroleum exploration, focussing on identifying oil and gas resources which may be located within suitable geological strata. The purpose is to determine the presence of a petroleum resource which could be investigated further. The initial 3-year exploration work programme will be restricted to non-invasive techniques, seismic surveys and the drilling of less than 10 core boreholes. No hydraulic fracturing or fracking is proposed for this exploration.

ENVIRONMENTAL AUTHORISATION PROCESS

Prior to the granting of an Exploration Right for the proposed project an environmental assessment process must be conducted and approved by PASA in terms of the National Environmental Management Act, 107 of 1998 (NEMA). Rhino Oil and Gas will make an application to PASA for environmental authorisation. The 2014 Environmental Impact Assessment Regulations (GN R982 promulgated in terms of NEMA) are applicable as the application for an exploration right is activity 18 in Listing Notice 2 (GN R984). The EIA Regulations define the assessment process which includes: a scoping phase, environmental impact assessment (EIA) phase and an environmental management programme (EMPr). Public participation is a key component of the environmental assessment process.

SLR Consulting (Africa) (Pty) Ltd (SLR), an independent firm of environmental consultants, has been appointed by Rhino Oil and Gas Exploration South Africa (Pty) Ltd to manage the environmental assessment process. This document has been prepared by SLR to inform you about:

- * the application and proposed project activities;
- * the environmental assessment process to be followed;
- * SLR's understanding of the possible environmental impacts; and
- * how you can have input into the environmental assessment.

PROJECT SUMMARY

Application: Environmental Autotisation for an Exploration Right in terms of Section 79 of the MPRDA.

Target Minerals: oil, gas, condensate, coal bed methane, helium and biogenic gas.

Locality: central KwaZulu-Natal. See Figure.

Properties in the ER: ~10 000 farms and portions, see list in Appendix 1.

PASA reference number(291 ER)

Please ensure that this reference number is included on all correspondence.

The following public scoping meetings have been arranged, the details are as follows:

Date and Time	Venue
Monday 2 Nov at 09h30	Ashburton Public Hall
Monday 2 Nov at 14h30	Richmond Agricultural Hall
Tuesday 3 Nov at 09h30	Imvunolu Secondary School
Tuesday 3 Nov at 14h30	Lions River Polo Club
Wednesday 4 Nov at 09h30	Colenso Public Hall
Wednesday 4 Nov at 14h30	Mooi River Country Club
Thursday 5 Nov at 09h30	New Hanover Public Hall
Thursday 5 Nov at 14h30	Greytown Lodge Conference Hall
Friday 6 Nov at 09h30	Mthembu Community Hall
Friday 6 Nov at 14h30	V.A Makhoba Hall
Saturday 7 Nov at 09h30	Nkandla Public Hall

You are invited to attend.

HOW TO RESPOND

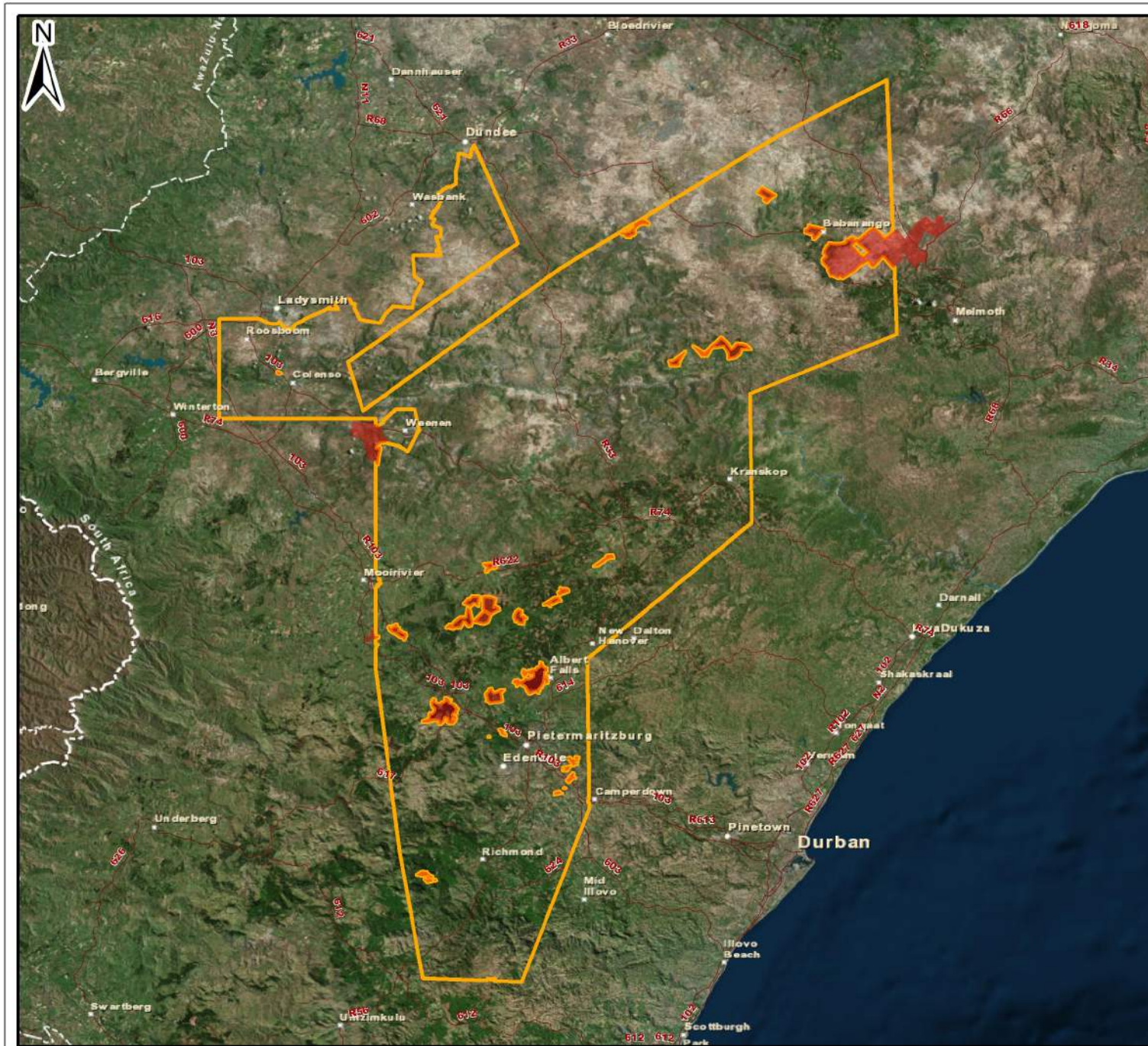
Responses to this document can be submitted by means of the attached comments sheet, at the planned scoping meetings (see detail above) and/or through communication with SLR

WHO TO CONTACT

Matthew Hemming or Stella Moeketse

(011) 467 0945 (Tel) or (011) 467 0978 (Fax) or


mhemming@slrconsulting.com or smoeketse@slrconsulting.com



Legend

-  Main Roads
-  Protected Areas
-  291 ER

Kilometers




Scale: 1:500 000 @ A4
Projection: Transverse Mercator
Datum: WGS84

RHINO ONSHORE KZN

Figure

Regional Locality Map

SLR  SLR Consulting (Africa) (Pty) Ltd
 P O Box 1596, Cramerville, 2060, South Africa
 Tel: +27 (11) 467-0945 Fax: +27 (11) 467-0978

723.18034.00005

October 2015

BRIEF OVERVIEW OF PROPOSED EXPLORATION

APPLICATION

The Petroleum Agency South Africa has accepted the application lodged by Rhino Oil and Gas for an exploration right for petroleum products. Acceptance of the application by PASA only permits the applicant to continue with the necessary process and does not constitute authorisation. The application for environmental authorisation is to be submitted to PASA in November 2015 and thereafter adhere to the timeframes prescribed in the 2014 Environmental Impact Assessment Regulations.

GENERAL

The 3-year exploration work programme proposed by Rhino Oil and Gas is aimed at determining if there is an oil or gas resource in the area that would warrant further exploration.

Year 1: the evaluation of geological data through a comprehensive desk-top study. Much of this data is only available to parties who hold exploration rights. Sub-surface structural features and stratigraphy will be mapped. Data on source-rock geochemistry will be acquired. Geological models may be developed.

Year 2: further geochemical data analysis as well as the possible use of apatite fission track analysis and full tensor gradiometry gravity (FTG) surveys.

Year 3: purchase and/or undertaking seismic surveys. The final exploration activity would be the drilling of core boreholes at target sites identified from the earlier work.

LOCATION

In broad terms the exploration right application extends from Richmond in the south to Ladysmith and Dundee in the north-west, passing just eastwards of Mooi River and Estcourt. In the north the area extends east almost to Ulundi and includes the regions around Tugela Ferry and Nkandla. The extent of the area narrows toward the south, including Kranskop, New Hanover and Asburton but being bounded just west of Camperdown. It includes nearly 10 000 farms over an area of ~ 1 500 000 ha. (see attached Figure and list of farms).

Physical, on-the-ground exploration activities will only be undertaken at a limited number of sites. The exact location of the target sites can only be determined once Rhino has completed the initial phases of exploration and examined the available data. Possible techniques include:

FTG SURVEYS

Full tensor gradiometry gravity (FTG) surveys will be undertaken to image subsurface geology in order to aid exploration. Such surveys will be flown in fixed wing aircraft and require no access to farms.

SEISMIC SURVEYS

Rhino will purchase seismic data where available and may commission seismic surveys to image subsurface geology. During a survey low frequency acoustic waves are generated and the reflected waves recorded. Analysis of the return waves provides information about rock types and possible

gases or fluids in rock formations.

Rhino is planning up to 100 km of two-dimensional (2D) surveys. Survey teams generate controlled acoustic energy (using explosives, air gun or seismic vibrator) and record the return waves in geophones laid at set spacing in a linear alignment.

Survey teams require short-term access to farms to place survey equipment and record the data. Survey lines will follow existing access roads and disturbances with due consideration of environmental constraints.

DRILLING

A maximum of 10 core boreholes are planned across the exploration area. Boreholes would be drilled by a truck or trailer mounted, mobile drilling rig very similar in size to a water borehole rig. Drill sites will be accessed using existing roads and farm tracks. The drill rig will be accompanied by supporting equipment (vehicles, trailers, compressors, water tanks, pumps, caravan etc). A typical exploration rig and equipment requires an operating area of approximately 1 000 m². See photos below.

Rock core will be extracted from the target strata and removed to a laboratory. Samples will be examined, described and tested for gas related properties.

Once drilling is completed the rig, all associated equipment and waste products will be removed from site. The borehole will be capped pending further investigation or sealed with cement if not required further.

No water abstraction, pressure testing or hydraulic fracturing of boreholes is included in the proposed work.

STAFF AND HOUSING

Early phase exploration will create relatively few job opportunities as most work is contracted to specialist service providers. The company will recruit locally as far as possible.

A seismic survey team comprises about 20 staff. A drill-rig is normally manned by a crew of up to 5 persons. No on site housing facilities are planned. Staff will be accommodated in nearby towns or at locations agreed with land owners.

TIMING

The exploration work programme is planned over a 3 year period. The programme is divided in phases with successful completion of one phase informing the next.

FTG surveys are completed in a matter of hours. Seismic surveys are undertaken over a period of months but the personnel and equipment are on site for short periods. Drilling at each site can take 1 to 3 months to complete.

ENVIRONMENTAL MANAGEMENT

The establishment, management and rehabilitation of all exploration sites will be done in consultation with land owners. The process of managing the impacts and rehabilitating the exploration sites will be conducted in terms of the environmental management programme produced for the project and approved by PASA.

LAND ACCESS

Private property will only ever be accessed with prior

consent of the landowner and then in terms of a written agreement. It is likely that access will be required to only a few of the properties within the exploration area.

The locality of exploration sites is largely flexible and can be adapted to minimise disturbance to land owners, occupiers, agriculture and the environment.

MOTIVATION FOR THE PROPOSED PROJECT

Petroleum products remain a vital source of energy. Natural gas comprises mostly methane and is a relatively clean, environmentally friendly form of energy. It can be used to generate electricity or provide heat for domestic and industrial purposes. Once extracted gas can be easily contained, transported and safely used in many applications. The type of downstream use is entirely dependent on the commercial scale of the resource.

FUTURE EXPLORATION OR PRODUCTION

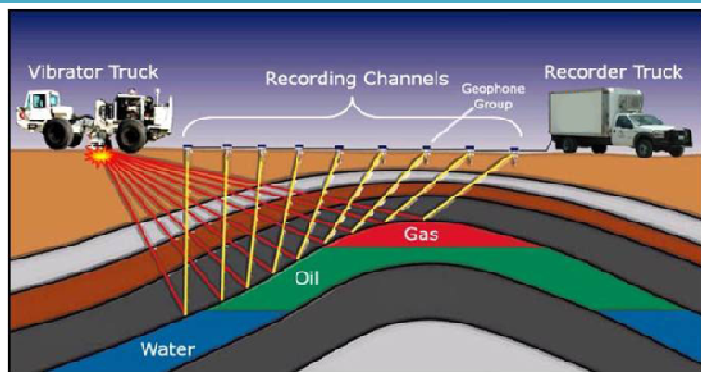
The current application is only to authorise the work as described above (and in detail in the Scoping Report). Any further exploration work to evaluate an identified resources or a future production would require further approval from PASA. Such approvals will be subject to the relevant legal requirements which include further public consultation and environmental assessment.

Rhino maintains that is not useful to speculate on the possible future direction of the project as the range of options is vast and the available information very limited.

PHOTOS



Typical FTG Survey plane



Schematic of seismic survey



Typical core drilling rig



Example of drilling operations



Rock core recovered for analysis

POTENTIAL ENVIRONMENTAL IMPACTS

The following preliminary issues and potential impacts have been identified and will be investigated as part of the environmental assessment process.

Farm Safety – Access by unknown persons to farms has the potential to influence security on farms. Operating heavy vehicles and equipment may pose safety risks. Run away fires may present a potential safety risks for both people and livestock.

Farm Infrastructure – farms roads, gates and fences may be damaged during exploration activity.

Soil and land capability– activities at the seismic and drill sites may affect soils and land capability if poorly regulated and not rehabilitated.

Biodiversity – activities at the seismic and drill sites have the potential to disturb and/or destroy vegetation, habitat units and related ecosystem functionality, including the disturbance of protected species.

Surface water – The proposed activities at the seismic and drill sites has the potential to pollute surface water resources through consumptive use and the discharge of contaminants.

Groundwater – the proposed drilling has the potential to consume and contaminate groundwater resources which could impact availability to other groundwater users and the ecosystem.

Air – The proposed project has the potential to contribute to air pollution, particularly through dust emissions from vehicles on gravel roads and the release of gas from boreholes.

Noise and vibrations – The proposed project has the potential to cause noise pollution during drilling activities. Seismic surveys may cause damage to structures and disturb livestock and wildlife.

Visual – the placement of seismic and drilling equipment has the potential to create short-term visual impacts.

Heritage resources – the proposed project has limited potential to damage heritage resources.

Land use –The seismic and drill sites may conflict with land use for the duration.

Socio-economic – the project has very limited potential to contribute towards socio-economic impacts. Positive impacts include job creation and stimulation of the local and regional economy. Potential negative socio-economic impacts include potential for increased crime, spread of disease and pressure on support services provision.

Cumulative and future impacts – although the current work may have limited impacts, a concern is that approval of this work could open the way for future,

larger-scale projects in the area. These may have much greater impact and be difficult to stop if investment has been made.

ENVIRONMENTAL ASSESSMENT

The assessment process aims to:

- provide information on the project & alternatives
- provide information on the potentially affected environment;
- identify, in consultation with interested and/or affected parties (IAPs), the potential negative as well as positive impacts of the project;
- provide an assessment of the significance of the impacts;
- report on management measures required to mitigate impacts to an acceptable level; and
- ensure informed, transparent and accountable decision-making by the relevant authorities.

STEPS IN THE ASSESSMENT PROCESS

Pre Application phase (September to November 2015)

Identify and inform IAPs & regulatory authorities of the proposed project (via direct consultation, newspaper advertisements, site notices, this document)
Receive issues and responses from IAPs.
Define outstanding issues and terms of reference for work to address potential impacts
Compile scoping report
Submit application to PASA (ito NEMA)

Scoping phase (November – January 2016)

Make draft scoping report available for review by IAPs and other regulatory authorities.
Collect IAP comments, update Scoping Report and forward to decision making Authorities.

EIA and EMP phase (February to July 2016)

Undertake any specialist investigations.
Assess impacts of proposed project and compile EIA and EMP report.
Make this available to IAPs and regulatory authorities for review.
Host possible public-feedback meetings.
Collect IAP comments, update EIA and EMP and forward to decision making Authorities.

Decision and Appeal

PASA to review EIA and EMP and make a decision.
Notify IAPs and regulatory authorities.
Appeal process in terms of Appeal Regulations

REGISTER AND COMMENT

All stakeholders are invited to register as Interested & Affected Parties (IAP). You must register as an IAP if you would like more information or wish to participate in the environmental assessment of the project. To register, or to raise any environmental issues or concerns regarding the project, please complete the Response Form and return it to SLR at your earliest convenience. IAPs registered on the project's database will receive notification of further meetings, report review periods and the decision.

Rhino Oil and Gas Exploration South Africa (Pty) Ltd

BACKGROUND INFORMATION ON PROPOSED PETROLEUM EXPLORATION ON VARIOUS FARMS IN KWAZULU-NATAL (291 ER)

REGISTRATION AND RESPONSE FORM FOR INTERESTED AND AFFECTED PARTIES

NAME			
ORGANISATION/FARM			
STREET OR POSTAL ADDRESS			
		POSTAL CODE	
WORK/ DAY TELEPHONE NUMBER		FAX NUMBER	
CELL PHONE NUMBER		E-MAIL	
PREFERRED CORRESPONDENCE (circle)	POST	FAX	EMAIL SMS
DATE		Signature	

DETAILS OF OTHER PEOPLE WHO OWN LAND IN THE AREA OR YOU FEEL SHOULD BE INFORMED:

PLEASE IDENTIFY YOUR INTEREST IN THE PROPOSED PROJECT:

PLEASE WRITE YOUR COMMENTS AND QUESTIONS HERE:

(use additional pages if required)

Please return completed forms to:

Matthew Hemming or Stella Moeketse
(011) 467 0978 (Fax) or Po Box 1596, Cramerview 2060
mhemming@slrconsulting.com or smoeketse@slrconsulting.com

Summary List of Properties in 291 ER – including all* portions of the listed farms (E&OE)

by Registration Division	
ET	
GROOT HOEK	1000
SPITZ KOP	1001
WATERFALL	1018
LANGE FONTEIN	1019
DOORN VLAKTE	1034
VAAL KRANS	1035
DOORN KLOOF	1036
KLIP GAT	1110
KLEINTHAL	1797
HOLT LODGE	1902
LLOYD	1914
SPRING VALE	1917
GORTON NO 2	1925
GORTON NO 1	1937
RESOLIS	1968
MURCHISON	2063
MIMOSA BRAE	2085
DURSLADE	2225
BRIDLEY MANOR	2245
BADY RUEL	3111
FERREBY	3516
ELINDON	3517
LONGLANDS	3559
GRETA NO 2	3823
SOUTH HILLS	3824
CAMPBELL	3912
GARTREF B	3945
SILFORD	4223

SPRINGVALE MISSION RESERVE	4343
LOT 5 UMKONYE	4749
BROMHAM HALL	4759
CARROL	4768
LOT 5 UPPER UMKOMAS	4971
WHITE HILL	5151
INKOOMAN	5186
INHLAZUKA VIEW A	5356
KELSTON	6221
LOT WS 7	7365
FREEMAN B	7518
LOT WD 1	9306
INKOMAN 2	10104
LOT 4A LANGEFONTEIN	10701
LOT 2 OF LANGEFONTEIN	10726
GLENDAWN	10969
AMANI	11201
BURNSIDE BLUFF	11243
FREEMAN A	11522
SUB 3 OF LANGEFONTEIN	12229
INHLAMVINI	12754
LONGLANDS	14948
SOUTH HILLS	14995
GLENTIN	16039
SMOKEY HILL	16150
GREENLANDS	16288
FT	17390
	17746
ORIBI	17775

FT	
	1
ZAMANI	2
ZAMANI	3
ZAMANI	4
ZAMANI	6
BROEDERS HOEK	793
ONGEGUND	795
DOORN HOEK	796
KRUY'S FONTEIN & WELTEVREDEN	826
MEYERS HOEK	847
ONRUST	848
NELS RUST	849
MAYBOLE	850
DRIE FONTEINEN	854
UITVLUGT	858
POLITIQUE	861
LOT 34	866
WILLOW	16454
WILGEFONTEIN	869
WAGENBEETJES DRAAI	875
WOODLANDS	876
STOCKLANDS AND OATLANDS	878
HOPEWELL	881
HARDINGS DALE	882
RETIEF	884
VAALKOP & DADEL FONTEIN	885
MIDDEL BOSCH	897
RIET SPRUIT	899

GROENE KLOOF	900
BOSCH FONTEIN	901
UMLAAS	902
NOOITGEDACHT	903
POORTJE	904
SHOOTERS HILL	908
MOOIGEPIERD	910
DARGLE	913
	17820
HEBRON	914
GROOTHOEK	920
CLARENDON	923
HALLIWELL	924
BROUGHTON	925
FIELDEN	930
BROOKDALES	935
ASHLEY	936
MARITZ DAAL	940
GROOT VALLEI	941
VAN VUUREN'S POST	942
BUFFELS BOSCH	944
WELTEVREDEN	946
ASHLEY	947
ALLEMANS DRIFT	950
DRIE FONTEINEN	952
DEESIDE FARM	17529
VAALHOEK	953
PETRUS STROOM	954
JEPSONS VLEY	956
KROMME DRAAI	958

BLINKWATER	959
ROODE SPRUIT	960
EILANDS SPRUIT	961
ELANDS FONTEIN	967
ZEEKOE HOEK	968
WELGEVONDEN	969
SPITZE KOP	970
BOSCH HOEK	973
WILGE SPRUIT	974
BESTERS HOEK	975
EVERDON	981
GEELHOUT BOOM	982
DOORN KOP	983
DE MAGTENBURG	985
WINTERHOEK	986
A B C D MILIE HOOGTE	994
ZAMENKOMST	996
RIET SPRUIT	997
WATERVAL	1003
UMHLATEEN	1006
MIDDEL HOEK	1011
KORT KRANS KLOOF	1012
SHAFTON	1014
WATERFALL	1015
WELTEVREDEN	1017
RENSBURG	1022
ELANDS HOEK	1024
KRUIS FONTEIN	1028
STANGER HOEK	1029
NIEKERKS FONTEIN	1031

Summary List of Properties in 291 ER – including all* portions of the listed farms (E&OE)

LANGE HOOP	1032
LANDSBERG	1037
RIET VALLEI	1043
LILIE FONTEIN	1053
HARTEBEESTE FONTEIN	1055
ILLOVO'S NEK	1056
VINKS RIVIER	1057
PROCES KRAAL	1059
VERMAAKS KRAAL	1061
SMALHOEK	1083
PATIENCE	17847
SUMMERFIELD	1084
WILDE ALS SPRUIT	1085
FT	18635
VOGEL VLEI	1087
DRIEFONTEIN	1093
SCHOONZICHT	1095
PAMPOEN NEK	1097
MIDDLE DRIFT	1098
WELGEGUND	1099
PETRUS VLEI	1103
UITZOEK	1104
SLANG SPRUIT	1105
PINE DALE	1106
PAARDE KRAAL	1107
COMMISSIE DRIFT	1109
LANGEOPDRAVENDE	1111
RUST	1112
SUCCESS	1113
RUSTENBURG	1116

BOSCH FONTEIN	1118
LEEUEW POORT	1120
GROOTE RIET VALLEI	1131
WELGEVONDEN	1132
KRUIS FONTEIN	1143
FT	18301
BLOEMENDAL	1144
NOOITGEDACHT	1149
ZEEKOEKAT	1173
UMLAAS POORT	1174
LELIEFONTEIN	1175
KEEROM	1190
MISGUNST	1191
VAALKRANTZ	1193
SARSGROVE	18529
RIET VALLEI	1206
LAMONTS VALE	1210
SPITZKOP OR ZAND FONTEIN	1216
BOSCH HOEK	1217
BOSCH HOEK	1219
AASVOGEL KRANS	1226
VAAL KRANS	1230
AASVOGEL KRANS	1233
ZOUTPANS VALLEY	1234
WONDERBOOM	1246
LOVO DALE	1271
MOUNT DESIRE	1272
WONDER GELUK	1273
CRAIGIE BURN	1277
ENON	1284

BOCKENHOUD FONTEIN	1289
BRAND VLEI	1292
LOT 37	1294
BRASFORT PARK	1295
WELTEVREDEN	1298
PAARD FONTEIN	1299
DOORN KLOOF	1301
RANKEILOUR	1302
DILSTON	1303
MISPA	1306
SEVONTEIN	1313
MOOIPLAATS	1315
DOORNKLOOF	1318
NAAUWPOORT	1319
CAMEL HOEK	1320
POORT	1322
PERSEVERANCE	1324
CAMPERDOWN	1330
WATERFALL	1333
OCKERTS KRAAL	1336
RONG POORT	1337
ZUUR RUG	1339
STERTRIEMFONTEIN	1342
WELGELUK	1344
WELTE VREDEN	1346
CRAIGIE BURN ESTATE	18026
ALIDA MOUNT	1347
UMVOTI HEIGHTS	1353
HARTEBEEST VLAKTE	1355
HOGHTON	1358

SOPHIA DALE	1360
HARTEBEESTFONTEIN	1362
HANNAHDALE	1363
VLAK HOEK	1371
GOUDINA	1373
BALMORAL	1375
ELANDSKOP	1377
ELANDS VLEI	1379
BUFFELSHOEK	1381
WELVERDIENT	1384
STRATHFIELDSAYE	1392
SCOTTSBERG	1395
BELVIDERE	1405
KOPERBULT	1407
BEAULIEU ESTATE	1412
LOT 72	1453
LITTLE HARMONY	1459
LOT 67	1465
HARMONY	1472
DUNBAR ESTATE	1478
LOT 6	1496
LOT 2	1499
LOT 8	1500
E F MILIE HOOGTE	1501
LOT 11	1506
LOT 10	1507
LOT 1	1511
LOT 3	1512
LOT 4	1518
LOT 9	1520

LOT 1	1613
LOT 2	1614
LOT 10	1622
LOT 15	1627
LOT 44	1656
LOT 45	1657
LOT 51	1794
SCHEEPERS DAAL	1798
RIVERDALE	1800
MOUNT ERNESTINA	1802
CRAMOND	1803
STREHLA	1806
HUIS RIVIER	1813
LOT 58	1814
LOT 53	1817
LIDDESDALE	1820
GLEN LYNDEN	1826
LOT 21	1827
LOT 4 & 5	1828
ALOE DALE	1829
ROSE BANK	1830
LOT 128	1831
SPRINGFIELD	1832
GREENFIELD	1834
SUTHERLAND'S VALE	1835
WHITECLIFF	1836
LINTON	1837
CRAIG NEVIN	1838
LOT 23	1839
LOT 107	1848

Summary List of Properties in 291 ER – including all* portions of the listed farms (E&OE)

STRATHAVON	1851
CLEVELAND	1852
COTTINGHAM	1856
CRAIGHEAD	1859
NEWLANDS	1861
SUNNY SIDE	1862
BURLEIGH	1863
KAR KLOOF	1866
SCOTT'S FONTEIN	1872
JAGERS VELDT	1873
PULTENEY	1879
UMVOTI HIGHLANDS	1880
CANEMA	1881
VLAK VARK VLAKTE	1885
UMVOTI VLEY	1886
SMIDT'S HOEK	1897
LANGVERWACHT	1901
PROCLAMATION	1904
LOT 20	1905
FAIRFIELD	1909
LOT 57	1915
LOT 22	1921
ROSEBANK	1932
SPECULATION	1940
CALDERWOOD	1946
SCOTTSDALE	1961
BAVIAANS KRANS	1981
BIRDS SPRUIT	1984
VICTORIA	1985
MIDDLEBURG	1989

MORMOND	1990
KLIP FONTEIN	1991
FURTH	1995
MOOR	1997
MIDDEL HOEK	2011
SCOTTS HOEK	2021
BERGVLEET	2022
DUNTREATH	2026
MISTLEY	2034
MOUNT PLEASANT	2042
GROENE KOP	2048
VAUCLUSE	2058
MOWBRAY	2088
PAARDE PLAAT	2095
INSINGOZI	2113
NORTON HEATH	2119
THOMASVILLE	2120
TALEVERA	2157
GARIBALDI	2161
SHACKLETON	2164
WARLEY COMMON	2166
RONDEBOSCH	2167
SWEET HOME	2175
SHEEPVELDT	2194
MOUNT VICTORIA	2202
EPWORTH	2204
ELANDSFONTEIN	2206
STANLEY HEIGHTS	2207
ROSEMOUNT	2209
ROSEMOUNT	18004

RIPLEY	2211
GREENHILL 130	2215
GLEN ALMOND	2259
GLENBOIG	2370
MANSFIELD	2373
PAUL'S REST	2402
MAREES MANOR	2403
MARE'S DAL	2404
EKUKANYENI	2588
BENNIDALE B	17441
LOT 50	2589
BLESBERG B	2863
EASTWOOD	2900
CROWS NEST	2903
RUDOLPH'S HOEK	2955
LONG	2961
ROBIN HOODS WELL	2973
HONEYSUCKLE DALE	2975
FUSCHIA GROVE	2978
ENFIN	2980
BLESBERG A	3032
CLEMENTWELLS	3146
THE PLAINS	3147
MOUNT WEST	3152
GLEN ROY	3166
PROUDFOOT	3171
STONEHENGE	3173
RIET VLEI	3281
LOT A	3292
TWEE FONTEIN	3293

WATERFALL	17679
BELMONT	3580
LOWER SPRINGS	3681
BANKFONTEIN	3765
HEEN-EN-TE-RUG	3766
GELUK	3767
ONRUST	3794
NELSMARE	4094
BURNSIDE	4117
MIDDLE DRAI	4129
SCAWBY	4211
KANGASHES VALLEY	4284
WATERFALL VIEW	4352
WOODVILLE	4476
LOT Z	4576
UMVOTI LOCATION	4667
INDALENI	4668
ZWAART KOP NATIVE LOCATION	4669
LOT B	4699
ELANDS RIVER DRIFT	4770
HART	4917
LOT 103	4929
LOT 102	4966
CHARD	5015
DARTMOOR	5093
RICHMOND COMMONAGE	5319
EXCHANGE	5691
FRIAR TUCK	6046
STACPOOLE	6055
BERLIN	6353

LOT WS4	6363
MOUNTAIN VIEW NO 2	6444
GLEN ALMOND NO 2	6449
WHITECLIFF NO 2	6545
LANGVERWACHT	6728
LOT R7	7148
LOT R 8	7149
UITZIEN	7160
LOT WS3	7161
LOT S58	7550
AVONDALE	7631
UMNYESA A	7642
MELMOTH	7673
LOT 104	7855
SUB B OF S 56	7959
LOT AA	8080
LOT S 57	8157
LOT EY	8276
LOT WS 6	8402
LOT 30	8506
LOT 31	8507
BARTMAN B	9147
GLEN ERSKINE A	9527
SUMMERFORD	9688
LOT S56 A	9775
LOT 105 BB	9894
MARESDAL	9919
WOMBAT	9996
NEW HANOVER	10076
BELLE VUE	10341

Summary List of Properties in 291 ER – including all* portions of the listed farms (E&OE)

FAIRDALE	10676
HIGHLANDS NO 2	11017
GLEN ERSKINE B	11103
GILES	11109
DISPUTE	11594
LOT A W	11625
FAIRFIELD	11815
TWEEDIE HALL	11880
NEW BOSCHFONTEIN	12011
WANSTEAD	12065
LUTON	12289
HILTON	12304
MATCHWOOD VLEY	12668
PERFECT	12700
BERHIL	12809
KENLOLA	12841
BERRYDENE	12857
HERITAGE	12961
LOT GARAGE NEW HANOVER	12964
VALLEYFIELD	12968
OTTO'S BLUFF	13013
SPROXTON	13068
NEWINGTON	13087
GLENARUEL	13096
AMBLESIDE	13098
CRANHAM	13121
BUSHY PARK	13150
KILDARE	13155
WOLDS	13156
KAMEELHOEK	13173

LINCOLNVILLE	13221
IMFENE	13318
BALMORAL	13347
WINDY HILL	13420
BROCKEN	13431
MAIZELANDS	13445
WAHROONGA	13458
SPRING VALLEY	13470
QUARME	13484
BRACO	13499
ROSEBANK	13519
TEVREDE	13537
ELECTION	13562
COMINS	13579
ESSENHYRST	13589
ILA	13613
WOODBURN	13614
FAIRVIEW	13686
BELLEVUE	13713
TALA	13731
YELLOW-WOOD	13732
MAKAYANE	13733
THE LOOP	13750
BELMONT	13775
SUMMERFIELD ANNEXE	13786
RIALTO	13788
LINDLEA	13790
MALDEN	13797
BROADACRES	13814
ROSELANDS	13833

MBONA	13856
DEEP DENE	13863
ADVENTURE	13870
WESTON TRAINING SCHOOL	13981
SHANDON	14004
HAPPY HILL	14005
BLACKHEATH	14030
WINTERSMOON	14061
CLEVELAND	14064
UKULINGA	14068
ARDEN	14074
MERINOS KLOOF	14088
TORWOOD	14121
THE GRANGE	14125
INGOMANKULU	14135
THORNHILL	14163
DORNOCH	14185
VEEPLAAS	14209
HAMPSTEAD PARK	14210
SUMMERHILL	14228
BINCHESTER GRANGE	14258
HATHORN	14259
ALBURY	14260
KNOLLE BANK	14297
SUNRISE	14303
FARM RAW	14328
BENTLEY	14350
SUNNYBRAE	14367
KENSINGTON	14383
LIBANON	14388

SITEKA	14400
KUSAN	14412
GLEN ARUM	14413
DELECTABLE DALE	14433
SARSDEN	14438
SAXONY	14444
LILLIESHOEK	14534
SPURWING	14537
ROYAL ALBERT	18620
HOLCOMBE	14640
SUNNYSIDE	14643
ROSSLANDS	14646
EROS	14647
KILDARE	14654
MOTEL	14655
ALBURY	14676
SHALWYN	14685
PENDENE	14712
THORNY HILL	14736
WESTWARD	14739
HATHORN	14759
RAINBOW RANCH	14767
HILLFOLD	14768
CHANCE	14769
MENNE	14779
FORDOUN	14783
ACUTT	14802
DORNOCH	14804
CLUNY PARK	14809
MILESTONE	14826

UMGETU	14830
PINES	14833
MPUSHINI	14835
MURRAYFIELD	14852
UMVOZANA	14853
BUCKAN	14858
ELDERSLIE	14861
HOPEDALE	14877
ELDERSLIE	14886
TABASKOP	14910
KLIPFONTEIN	14938
ORANGE	14940
KHAYA LAMI ESTATE	14941
SAXONY	14942
BREWITT	14958
NATAL CRUSHERS	14967
WANGANELLA	15002
MOOIPLAATS	15017
MOOIPLAATS	15018
ATHLONE	15050
UMGENI VALLEY	15051
MITCHELL	15064
IDLEWILD	15065
ROSEDENE	15098
UNIVERSE	15099
WINDY HILL	15135
LINTON	15171
HYMANY	15173
WOODSTOCK	15193
WORLDS VIEW	15195

Summary List of Properties in 291 ER – including all* portions of the listed farms (E&OE)

JIM CROWE	15231
GREENOCK	15234
BENAVIDEZ	15244
MZWATEEN	15265
ANDOR	15271
FAT ACRE	15272
ROODT	15287
MENNETAL	15288
GAYWOOD	15315
HAWKSTONE	15344
THE MYNDE	15363
EZULWINI	15380
LINWOOD	15383
SUGAR HILL	15386
MOOIDRAAI	15392
CIARA	15424
HILLERMANN	15434
BLACKWOOD	15438
FALKENSTEIN	15441
HEIDELBERG	15442
THORNHILL	15446
WOODCARB	15448
THE START	15458
REBELAH	15509
RENHOF	15522
HOPE	15524
WHINSTONE	15529
BARKSTON ASH	15533
SAOSOLITO	15535
LYTHWOOD	15546

HAGEDASHIA	15553
AVO	15554
ARLINGTON	15561
SHALLOW DRIFT	15565
SHALLOW DRIFT	18642
SUMMERHILL	15571
LINCOLN	15580
SHALOM	15583
PEPPERTREES	15584
HARRIS	15586
MANSFIELD	15609
STONEHAVEN	15626
STRATHAVEN	15669
SOUTHFORK	15698
KINLOCH	15716
EDMORE	15720
SUMMERHILL	15721
CROOKES	15723
JOYDEN	15744
BLINKWATER	15752
ARROCHAR	15753
GLEN LORNE	15754
MIDDEL HOEK	15757
	16968
KLIPFONTEIN	15758
VERSAMELING	15759
PERSEVERANCE	15767
INGOMANKULU	15772
MARITZBURG QUARRIES	15773
WILLOW GRANGE	15795

WOOLSTONE	15801
DASKLIP	15802
CARWIN	15813
AUSSCHAU	15816
GLEN AFTON	15851
INSTEAD	15857
RIVERBANK	15862
ANTELOPE	15863
LINCHESTER	15875
WINTERHAVEN	15888
HIGH PEAK	15933
HEBRON A	15938
WATERFORD	15946
AHRENS	15964
KETHRO	15969
GAWITH	15972
CARWIN	16036
EASTGATE	16041
TOP GEM	16051
THE GEM	16052
RUST	16053
THE PEAK	16097
HARBERRY	16117
MILES	16122
OATLANDS	16124
MARITZ DAAL	16126
GREENKOPPIE	16130
TALA	16135
JAKOBI	16140
OAKLEIGH	16144

BRANDVLEI	16155
BARTHOLOMEW	16169
GALTON	16178
WOLDS	16179
OSNABRUCK	16189
LITTLE HARMONY	16194
LITTLE HARMONY	16195
MOOIKLOOF	16196
BROMHEAD	16197
CHARD	16198
BRAMSCHE	16208
CALDERWOOD	16209
DONOVALE	16218
PETRUS STREAM	16263
STOCKBARTH	16270
ENDEAVOUR	16289
CAVERSHAM	16351
STRATHAVEN	16363
SAPPI	16412
TRIANGLE	16424
FUSCHIA GROVE	16431
FAULKLANDS	16441
DONSPRUIT	16442
FAY	16516
BRIAN	16517
DALES	16518
SUMMERBRIDGE	16519
NARNIA	16532
FT	16546
BEAULIEU	16578

LITTLE HAVEN	16597
HIGHGATE	16635
BERLYNN	16642
	16647
EILANDS SPRUIT	16667
NEWBROOK	16668
WELVERDIENT	16669
BUSHBUCK	16676
SEVSTAN	16677
FRIEDELSCHEIM	16690
THANDISIZWE	16691
FT	16699
RIETVLEI	16703
BRINSTONE	16726
FT	16753
ABOYNE	16757
CRANWELL	16771
HEATHLANDS	16782
RHUBEG	16805
ASHTON	16835
OAKSPRING	16844
CAME	16853
SOLACYRE	16879
BROADACRES	16881
HIGHTHORN	16884
BELLEVUE	16900
VALLEY VIEW	16954
TWYFELFONTEIN	16965
THE FARM TWO STEAMS	16969
VASTA'S ORGANIC	16978

Summary List of Properties in 291 ER – including all* portions of the listed farms (E&OE)

NORTHFIELDS	16983
SINKWAZI	16991
CANLEIGH	17125
FREESTONE	17211
ZEEKOEGAT	17216
THORN RIDGE	17217
	17219
UMVOTI KLOOF	17232
SYLVAN GROVE	17235
LITTLE GRANGE	17249
HOLCOMBE EAST	17305
RIVERSFIELD	17312
DE SWART	17324
FT	17326
SPRINGHOLM	17339
ZULU FALLS	17341
LINCOLN	17346
SUNNYBRAE	17347
BAYNESFIELD	17359
FT	17422
DRUMMOND TOR	17429
SEVENOAKS	17467
SCOTTSDALE	17471
WHISPERS	17478
SUNSHINE	17503
UMLAAS POORT	17536
FIFEHEAD TWO	17578
SOUTHFIELDS	17580
FORDOUN	17585
FAGA Z AAN	17599

NETHERWOOD	17609
NETHERWOOD	17610
FT	17617
MISTY VIEW	17666
FT	17667
UITZOEK POORT	17668
GELUK	17681
NAAUPOORT NORTH	17703
BLACKWOOD	17761
DE SWART	17764
DE SWART	17765
ETHANGENI	17784
MORNING SUN	17790
	17799
FALLS	17800
	17830
NEW LEEDS	17871
BELMONT	17887
	17924
CLEVELAND	17926
SAXONY	17928
HOG'S INN	17929
TIMSHELL	17942
FT	17953
	17955
FT	17959
FT	17960
MARYLAND	17961
HIGHTHORN	17989
SMIDTS HOEK	18002

CROOKES	18003
WATERVAL	18006
FT	18027
FT	18028
	18042
BOULDER HILL A	18055
BOULDER HILL B	18056
MOUNT VERDE	18081
ALMOND BANK	18092
HOLCOMBE	18111
FT	18297
SHACKLETON	18298
	18318
MPOFANA FOREST	18325
WOODLANDS	18339
MOUNT PLEASANT	18375
FORDOUN	18376
SUKHOON	18377
BIGGS	18388
CRANE VALLEY	18391
POYNTON	18398
FT	18424
ALLERTON	18455

GS	
NONDELA	1
MOORD KRAAL	830
VAALKRANTZ	831
DOORNKOP	837
STERK SPRUIT	912
MIDDLEPLAATS	916

LANGVERWACHT	1044
VLAK PLAATS	1047
TUGELA DRIFT	1062
SWARTZKLOOF	1064
RIET KUIL	1067
DAVELS HOEK	1080
GROOT HOEK	1081
KLIP POORT	1082
VERTREK	1091
ROOS BOOM	1102
ROODE POORT	1119
STRYD POORT	1136
VARKENS FONTEIN	1138
DEEL DRIFT	1139
CROMLEYBANK	1146
SCHURFDE POORT	1147
KOP LEEGTE	1154
DOORN SPRUIT	1163
GELUK	1166
GOEDGEDACHT	1177
FOURIES KRAAL	1183
DOORN KLOOF	1184
MODDER SPRUIT	1185
HERMANUS KRAAL	1186
RIET BULT	1213
BRAKFONTEIN	1214
HAASE FONTEIN	1228
LABUSCAGNES KRAAL	1229
GEVONDEN	1243
KRANTZ KLOOF	1245

KERK PLAATS	1265
VARKENS HOEK	1321
GANNA HOEK	1348
ZAND SPRUIT	1367
HILLGROVE	2056
CHIEVELEY	2094
DRIEHOEK	2247
WESTON	2365
STONY RIDGE	8173
LOT 10 VARKENS FONTEIN	10219
THE SHAWS	11317
CLAPHAM KLOOF	11318
LOT 43 WINTERTON SETTLEMENT	11544
B 43 WINTERTON SETTLEMENT	11546
LOT Y WINTERTON SETTLEMENT	11549
LOT B 49 WINTERTON SETTLEMENT	11551
LOT 49 WINTERTON SETTLEMENT	11552
B 48 WINTERTON SETTLEMENT	11873
WINTERTON IRRIGATION BOARD	12117
LOT 47 WINTERTON SETTLEMENT	12120
LOT B47 WINTERTON SETTLEMENT	12129
BLOUKRANS	12771
LOT 44 WINTERTON SETTLEMENT	12811
LOT B 44 WINTERTON SETTLEMENT	12812
LOT 41 WINTERTON SETTLEMENT	12828
LOT A 42 WINTERTON	12829

Summary List of Properties in 291 ER – including all* portions of the listed farms (E&OE)

SETTLEMENT	
LOT 42 WINTERTON SETTLEMENT	12830
BRAKFONTEIN SETTLEMENT	12840
LOMBARDS KOP SETTLEMENT	12873
LOT 45 WINTERTON SETTLEMENT	12892
LOT B45 WINTERTON SETTLEMENT	12894
KRANSKLOOF	13091
LOT NO 46 WINTERTON SETTLEMENT	13191
LOT NO B46 WINTERTON SETTLEMENT	13193
LOT Z WINTERTON SETTLEMENT	13671
FALLS	14039
NTANYANE	14854
MTONTWANE	14855
GELUK	15217
GROBBELAARS KLOOF	15218
QINISA	15312
BON JOY	15456
GROBBELAARS KLOOF	15689
DOORN KOP	16271
JACOBSRUS	16364
OOSTHUISEN KLOOF	16646
EZAKHENI	16863
EZAKHENI RAIL	17298
	17492
FOUNTAINDALE	17493
HORNER	17818
	18030
CHIEVELEY	18031

GT	
HARTSTOGT	11
DOORNHOEK	112
VECHKOP	168
KROMELLENBOOG	266
BABANANGO	473
PIET RETIEF	568
KRANSKLOOF	1038
NOODHOEK	1049
KRANTZ KOP	1065
GOEDE KEUS	1066
PAARDE BERG	1068
BERGVLIE	1075
UITHOEK	1078
UITKYK	1086
DOORNHOEK	1094
VARKEN'S VLEI	1096
WINTERHOEK	1108
NAAUW KLOOF	1115
BRAAK FONTEIN	1121
BLAAUW KRANS	1123
VERMAAKS KRAAL	1124
SPITZ KOP	1133
DOORN KRAAL	1137
BLINKWATER	1150
SOM'S HOEK	1151
KLEINE WATERVAL	1152
WAAY HOEK	1153
KLIP FONTEIN	1155
UITVLUCHT	1156

ASYN KRAAL	1158
KLIP POORT	1162
VAALKOP	1164
NIEKIRK'S KRAAL	1167
KRANTZ KLOOF	1176
NIETGEDOCHT	1192
RONG POORT SPRUIT	1200
AANGELEGEN	1201
ZYPHER FONTEIN	1212
VRISGEWAAGD	1238
UITVAL	1244
ONRUST	1255
BURRUPS	17757
BUSHMANS RIVER MOUTH	1280
MIDDEL PLAATS	1281
BAVIAANS KRANTZ	1290
JAMMER FONTEIN	1311
OVERVLOED	1338
BROEDERS HOEK	1343
LOOTS HOEK	1359
ZONDAGRIVIERSPOORT	1361
FITTY PARK	1364
KROMME-ELLEM-BOOG	1365
UITKYK	1366
KRANTZ KOP	1376
ALBANY	17333
SPEKFONTEIN	1378
BOSMAN RIVIERS POORT	1386
KUICK VLEI	1396
WITTE KRANTZ	1808

IMPANZA RIVER	1843
DOORN BERG	1846
GELUK STADT	1847
NELS RUST	1857
ROODE BOK VLAKTE	1858
VET SPRUIT	1888
WELTEVREDEN	1900
ROMAN SPRUIT	1906
LOT 8	1907
BUFFELS HOEK	1931
KAAL HOEK	1965
TUGELA RAND	1974
WONDER FONTEIN	1976
BLINKWATER	1987
ROODE DRAAI	2008
LUNENBURG	2015
MONA	2023
ORRIBE FONTEIN	2040
KLEIN DOORN HOEK	2065
PRETORIA	2078
VERDRUK	2080
GOEDE HOOP	2093
BERNING	2097
BELLEVUE	2098
CECILIA	2100
WOODFORD	2102
ELLENA BERG	2103
LILY FONTEIN	2106
ZWAGERS HOEK	2130
ACHLEEAN	2137

HARTEBEEST FONTEIN	2152
UITKYK	2156
ROOSDAL	2176
PEARL	2178
GRETNA GREEN	2195
ELSDALE	2198
SHENFIELD COMMON	2203
THORNTON	2243
COALFIELD	2273
STRATFORD	2367
SUTHERLAND	2372
MAUCHLINE	2396
BEITH	2401
KELVIN GROVE	2411
OUTFALL	2414
SUTHERLAND	2417
ELLESMERE	2422
POTSPRUIT	2894
RENNISTON	2914
LOT 1	2948
CRAIGMILLAR	2971
BALGOWNIE	2972
DOORN VLAKTE	2985
AMSIBIE	3110
PADDAFONTEIN	3214
RAMA	3231
COBURG	3232
DUIKER HOEK	3283
BOSCHFONTEIN	3307
DUMAIN	3323

Summary List of Properties in 291 ER – including all* portions of the listed farms (E&OE)

CRAIGNEATHAN	3326
ELANDS KRAAL	3327
HELENA	3479
KEMPENFELDT	3541
DINGLEY DELL	3549
CORNWALL	3558
MAXWILTON	3624
MEADOWBANK	4130
STRATHERNE	4134
CLARKESTON	4146
ALETTA	4203
KLIP HOEK	4232
KROM HOEK	4235
NORTH HOEK	4236
KOORN SPRUIT	4355
OLIVEFONTEIN	4427
MUDEN MISSION STATION	4543
HOPETOWN	4549
KLIP RIVER NATIVE LOCATION	4665
TUGELA LOCATION	4674
IMPAFANA LOCATION	4677
EHLANZENI GLEBE MISSION	4695
ETEINBENI	4696
UP AND DOWN	4962
ZUURFONTEIN	4980
OMDRAAI	4981
FREIBURG	4985
VERMAAK	5045
DABULA	5062
GEORGE IB	5066

ELANDS' BERG	5077
SOMERSET	5079
SCHULHOEK	5111
GROOTE VLEI	5112
LOT T	5137
UPSALA	5172
SALBO	5252
SPENDIKRON	5294
DAAS KRANTZ	5311
WOODLEIGH	5321
KLIP KOP	5323
KLIP ROTS	5324
DRESDEN	5337
DORI	5351
WELVERDIENT	5549
ALVA	5554
HARDING	5574
HOPE	5684
B OF SIMBRIA	5723
LOT A OF SIMBRIA	5724
GEORGE I A	5749
GEORGE II A	5750
ALOES A	6026
SALISBURY PLAIN	6213
KEEROM	6216
THORNDALE	6217
ROODE WAL	6218
OLIFANTS HOEK	6219
OVERSCHOT	6259
MINA	6352

ALMA	6473
WILHELMSHOHE	6827
ALOES	6965
WELVERDIENT A	7112
HAZELWOOD	7150
HAZELWOOD NO 2	7151
HILDA'S BERG	7287
PRESSION	7288
FREESTONE	7289
THE PEAK	7554
TUGELA VIEW	7611
THORNHILL	7612
MIST NO 1	7636
TARKA	7641
YATTON	7647
BUFFALO KRANZ	7682
1A OF WELVERDIENT	7695
2A OF WELVERDIENT	7696
MIST NO 2	7702
ROODE KLIP	7706
FROGLANDS	7730
DONDO	7741
STONEHILL	7742
SOLITUDE	7748
MARA	7810
LOT 29 QUDENI	7823
MALI A	7853
WELVERDIENT 3A	7862
JOBS DALE B	7876
KLIP RAND	7917

NIETGEDAG B	7938
CORRECTION	7949
WINTER LODGE	7954
BUFFALO HOME	7965
SOUTH KOLOMBE A	8045
RUTLAND	8072
WINTERPOORT	8073
HAMPTON GREEN	8138
RETREAT	8142
KRANTZKOP	8143
PETROSCAR	8307
MISSION STATION ETEMBENI	8312
DAAS KOP	8320
ONGELUK	8448
LANSDOWN	8466
VERNIER	8628
BUFFELSHOEK	8722
M G B	8745
LOT M G A	8761
LOT 9	8779
LOT N	8784
RAVINE	9201
11 QUDENI	9310
HARTEBEESTFONTEIN	9531
NORTH KOLOMBE	9656
LOT 8 QUDENI	9943
LOT 10 MUDEN	10365
LOT B MUDEN	10366
ALSTON	10373
ORIBI FLAT	10542

LOT 2 MUDEN	10771
LOT 3 MUDEN	10772
LOT 5 MUDEN	10774
LOT 6 MUDEN	10775
LOT 7 MUDEN	10776
LOT 9 MUDEN	10778
LOT A MUDEN	10779
2 QUDENI	10823
LOT 5 QUDENI	10859
LOT 16 QUDENI	10926
WESTVILLE	11014
DEVONDALE	11039
LOT 7 QUDENI	11061
UPTON	11146
FUGITIVES DRIFT	11158
NAVARRÉ	11174
ENSINGABANTU	11299
TAGALIE	11342
CORRIEDALE	11630
NOTGEDOG B	11648
SOUTH KOLOMBE B	11773
TWIJFELHOEK	11776
THE HEIGHTS	11866
THE SPINNIES	11931
LOT 12 KUICK VLEI	12099
MALI B	12177
LOT C MUDEN	12376
LOT 14 QUDENI	12401
UMHLUMBA	12482
KUICK VLEI SETTLEMENT	12751

Summary List of Properties in 291 ER – including all* portions of the listed farms (E&OE)

BIGGARSGAT	12753
LOT D MUDEN	12912
LOT E MUDEN	12913
OSAKA	12977
BONNY DOONE	13065
PUSSYFOOT	13070
ASTON LODGE	13072
KLIPKOP	13159
DRUTEN	13177
PYRAMID	13178
BELLEVUE	13190
LORAINÉ	13209
SPRING	13210
LANGVERWACHT	13301
AUSSICHT	13304
LOT H MUDEN	13588
ALOR	13625
WEST KIRBY	13703
GLENWOOD	13707
NELS RUST	13723
QUDENI	13905
OTTOS KLOOF	14550
KLIPNEK	14644
BOMBAY	14697
KAISHA	14719
NOCIFA	14742
DENT	14746
MENOCK	14770
KALWERFONTEIN	15122
IMPALA	15179

KAMBA	15180
NAZARETH	15183
OLIVEFONTEIN B	15405
SIGWEJE	15409
SWARTWATER	15417
WELTEVREDE	15497
WELVERDIEND	15498
MOUNT SAINT BERNARD	15528
UITKOMST	15564
IMPALA	15680
KRAAL	15715
DARKEST AFRICA	15724
MOUNTAIN VIEW	15727
PENDUKA	15781
RESERVE NO 18	15838
STEYN	15973
ALLENDALÉ	16094
FURNITURE	16174
DE DOORNS	16182
SIKA	16303
TAGAS KLOOF	16304
MATSHÉMAN	16389
MOUNTAIN ANNEXE	16617
VOIGTSDALE	16657
ORIBI HILLS	16661
PLATBERG	16714
ELIM	16738
TWEE KOPPIES	16739
WONDER FONTEIN	16776
UITSIG	16857

NCUNJANE	16872
NHLAWE	16911
GT	16950
	16980
WELGEMOED	17043
DULUMBI HEIGHTS	17119
SHENFIELD	17186
	17282
GT	17318
BRACKSTONE	17319
	17320
GT	17334
WOODRIDGE	17343
GT	17484
NYATHINI	18022
HLATHI	18486

GU	
MELKBOOM	7
MINHOOP	14
BABANANGO	17
WELKOM	28
BLOEMHOF	34
WELTEVREDE	41
LOTSKLOOF	44
ENGELBRECHTSHOOP	53
ROOIPOORT	60
STRIJDPLAATS	63
WELVERDIEND	66
LANGVERWACHT	74
BLAUWBANK	78

WONDERDRAAI	86
NONPAREIL	95
WELVERDIEND	98
NAAUWKLOOF	128
BOKKIE	153
UITZONDERING	155
HARTSKAMP	160
DEWAARD	188
PANDA'S GRAF	189
WELGEKOZEN	191
SCHURWEBERG	192
MOORDPLAATS	193
GROOT GELUK	201
UITZICHT	203
ZOEKMY	207
KEURPLAATS	218
LANGGEWACHT	235
MOOIHOEK	238
VUURSTEEN	242
HEELGOED	258
WELLUST	263
VRISCHGEWAAGD	279
VERDUBBELD	280
SUCCESS	296
WELTEVREDEN	302
BERGVLÍET	311
PROSPERITY	323
LANGKLOOF	325
GELUKSFONTIEN	330
LANGFONTEIN	336

HIJ IS NET ZOO	343
VAALBANK	347
UITZICHT	349
UITKIJK	353
PAARDEPLAAT	357
STRANGERS REST	362
GELIKWATER	365
DRIEFONTEIN	366
SCHEEPERSHOEK	375
HOLLANDIA	384
SCHOONUITZICHT	385
DOORNHOK	391
MOOIHOEK	394
LANGVERWACHT	410
TUSSCHENBY	411
DOORNKROON	412
SWEETHOME	413
SLABATINIE	419
OUDEWERF	426
ONTEVREDEN	433
TOGGEKRY	436
SPRINGFIELD	440
LANGGEWACHT	449
WELVERDIEND	451
WITKLIP	475
VREESTNIET	481
GOUDEN RIF	484
VRIENDSCHAP	492
GOEDGELOOF	496
GOUDHOEK	498

Summary List of Properties in 291 ER – including all* portions of the listed farms (E&OE)

TAFELBERG	502
EVERGREEN	516
WELGEVONDEN	527
DUIKERFONTEIN	528
GOUDRIF	532
VLAKHOEK	548
TWEEFONTEIN	554
PLATBERG	583
JORDAAN	656
PERTH	719
NON PAREIL	721
LULU	722
HAMBROCK	748
KATAZO	749
WINTERKAMP	757
ARGYLL	758
BAREND	781
WYDGELEGEN	820
GOUDRIF	822
ENTYEE	838
WELLUST	846
VLAKHOEK	847
SCHNETLERSRUS	849
WONDERDRAAI	850
NAUWKLOOF	6099
NINIVE	6100
TAFELKOP	6101
MOOIPLAATS	6102
RECHTERSWELL	6103
UITZONDERING	6116

PROSPECT	6117
DIEPKLOOF	6118
NOOITGEDACHT NO 96	6119
MINHOOP	6131
KEURPLAATS	6132
VRISCHGEWAAGD	6133
LOT 40 QUDENI	13160
RESERVE NO 19	15839
NOBAMBA	16505
MATATANE CROCODILE	17384
INHLAZATJE	17387
	17954
GU	17993
GU	18299
GU	18300

GV	
LOT K 9 KWAMBONAMBI	13133